



Intelligent Compact Thermal Printer ■ ■ ■

The Workstation is the newest generation of desktop printers from Datamax-O'Neil. These compact desktop printers offer an industry leading design that contribute to its durability while its standard features are similar to those found on the Performance printer line. These features include Ethernet 10/100, 50 resident/scalable fonts, 300 dpi printhead for superior print quality and industry standard PCL5e printer language. The compact design is perfect for environments that require a small footprint and the internal design provides reliable performance and efficient output.

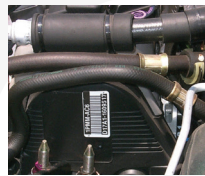
The Workstation printers are designed for a wide variety of industries and applications that require a small yet powerful printing solution. The Workstation's superior print quality is ideal for applications such as pharmaceutical, product labeling, asset management and shelf labeling.

These compact thermal printers can dramatically reduce costs by streamlining operations, increasing productivity and managing your important assets.

features at a glance ■ ■ ■

- **Compact design** - Provides reliability and durability for environments requiring a small footprint for the most efficient output.
- **Easy to use and support** - For straightforward integration allowing for a wide range of applications to ensure that staff is spending less time getting printers up and running and more time getting the job done.
- **Simple calibration** - Offers printer operators freedom from complex and time consuming media setup.
- **PCL5e standard language** - (Laser compatible thermal printer) Allows for easy transition from proprietary languages or legacy systems while enhancing quality of graphics, text and barcodes.
- **50 resident scalable fonts** - This is the new standard in thermal barcode printing. No longer restricted to a limited font selection, users can create custom labels on-demand.
- **Standard 300dpi printhead** - Users now benefit from a higher resolution printhead with better text, images and barcodes at a 203dpi printhead price.
- **Lock option** - Locks, protects and secures your pharmaceutical labels, tickets and retail labels and tags, reducing the possibility of theft, counterfeit and access by unauthorized personnel.

popular applications ■ ■ ■



Manufacturing

- Product Labels
- Work-in-Progress
- Repairs Tracking
- Agency Labels
- Instructions



Retail

- Item Labels
- Shelf Tags
- Specials and Talkers
- Returns Labeling/Tagging



Healthcare

- Specimen Tracking
- Records Labeling
- Patient ID Wristbands
- Asset Identification
- Pharmacy



Postal Service

- Shipping Labels
- Parcel Routing
- Delivery Management

your benefits ■ ■ ■



Non-Proprietary PLC5 – The

Workstation offers PLC, a globally adopted standard/laser compatible printer language that allows easy integration into SAP® and other network environments.



Ease of Use - With the Patent Pending

one-hand-open design, the printer can be quickly and easily loaded. This not only saves time, money and labels, it also improves operator efficiencies and reduces waste. The industry leading double-sided Top of Form Sensor allows the user to choose the sensing method that best suits their application.

Lowest Cost of Ownership –



The Workstation is available at a lower cost than comparable desktop printers and its durable design ensure years of reliable performance. The printer offers standard features that are typically options for competing printers.

Easiest Setup and Network Management.



- Use your Standard Network Management tools!
- Like Tivoli and HP OpenView
- Network Time Protocol (NTP)
- Robust SNMP support.
- HTTP Web Server



print technology ■ ■ ■

- Printer type:
 - Direct thermal
- Print length range:
 - 0.25in – 99in/ 6.mm – 2514mm
- Resolution:
 - 300 dpi (12 dots/mm)
- Printhead
 - 4.16/105.7mm
 - Media Width
 - .75 -4.33in/19-110mm
- Max Print Speed
 - 4ips/102mmps
- Media-Hanger
 - Self-Centering Media Hanger/center bias printing
- Memory
 - 32MB Flash/64MB DDR2 SDRAM

physical characteristic ■ ■ ■

- Color:
 - Cool Gray
- Operating temperature:
 - 32°F to 104°F (0°C to 40°C)
- Construction:
 - Split case with easy patent pending one hand opening design.
 - Double walled durable Flame retardant ABS Plastic
 - media window
- Weight
 - 3.2lbs/1.45kg
- Dimensions
 - WxDxHin 6.75x8.32x6.02
 - WxDxHmm 172x211x153
- Power source:
 - Auto-ranging power: External Power Cube. 100-240V, 50-60Hz +/- 10%, IEC320 input power connector

integration ■ ■ ■

- Communication Ports:
 - USB 2.0 Device and Ethernet 10/100
 - Optional Serial Interface (RS-232C)
- Network support:
 - DHCP, TCP/IP, UDP, DNS, BOOTP, NTP, SSH
 - SNMP Supported with 64MB RAM Robust MIB
 - Embedded Configurator: Resident printer configuration tool
 - Drivers: Windows® XP, Windows® 7
 - Network Management is done with your standard HP Compatible network management tools. Works with HP Openview®, Tivoli® and others.
- Apple
 - Works in MacBook Pro® with the HP Laserjet® Series PCL4/5 driver SAP® ready

barcodes/fonts/graphics ■ ■ ■

- Barcodes:
 - Aztec, Codabar, Code 128 Autoswitch, Code 128 Code Set A, Code 128 Code Set B, Code 128 Code Set C, Code 3 of 9, Code 93, DataMatrix, EAN-13, EAN-8, Extended Code 3 of 9, FIM, GS1 Databar (RSS), GS1-128(UCC/EAN Code 128), HIBC, Interleaved 2 of 5 with a module 10 checksum, & shipping bearer bars, MicroPDF417, PDF-417, Planet, Plessey, Postnet, QR Code – Auto format, Telepen, UPC-A, UPC-E, UPS MaxiCode
- 50 Standard resident Scalable fonts:
 - Albertus Medium, Albertus Extra Bold, Antique Olive, Antique Olive Italic, Antique Olive Bold, Arial, Arial Italic, Arial Bold, Arial Bold Italic, Clarendon Condensed Bold, Coronet, Courier, Courier Italic, Courier Bold, Courier Bold Italic, Garamond Antiqua, Garamond Kursiv, Garamond Halbfett, Garamond Kursiv Halbfett, Letter Gothic, Letter Gothic Italic, Letter Gothic Bold, Marigold, CG Omega, CG Omega Italic, CG Omega Bold, CG Omega Bold Italic, CG Times, CG Times Italic, CG Times Bold, CG Times Bold Italic, CG Triumvirate Bold, CG Triumvirate Bold Condensed, Times New Roman, Times New Roman Italic, Times New Roman Bold, Times New Roman Bold Italic, Univers Medium, Univers Medium Italic, Univers Bold, Univers Bold Italic, Univers Condensed Medium, Univers Condensed Medium Italic, Univers Condensed Bold, Univers Condensed Bold Italic, Symbol, Wingdings, OCR-B, OCR-A
 - Downloadable Font Types True-Type, PCL Bitmap (300 dpi),
- PCL Macros
 - Multiple PCL Macros can be store in flash.
 - Overlay Macros can be used and store in flash.
- Graphics
 - Full support of PCL5e and GL/2 graphics capability is provided. (Support of various host based file formats such as PCX, BMP are not part of the PCL5e standard but are supported and converted by standard applications) Industry standard printer language HP P.J.L, HP PCL 5e, HP GL/2 and HP XL, printer languages with auto language select in addition to extensions for barcode. Also provides standard bi-directional communications capabilities

agency approval ■ ■ ■

Contact sales representative for the most current approval list

warranty ■ ■ ■

- Printer*: 1 year (including platen roller and installed options)
- Printhead*: 1 year or 1,000,000 inches whichever comes first
- Contact sales representative for extended warranty options

**when used with approved supplies*

media compatibility ■ ■ ■

- Media Type
 - Direct Thermal
- Media Range
 - Width .75-4.33in/19-110mm
 - Thickness .003-.008in/.076-.20mm
 - Media Supply
 - Roll-fed, die-cut, continuous labels: 5in/127mm roll max diameter on 1in/25.4mm core or 1.5in/38mm core
- Double Sided Top-Of-Form Sensor
 - Fixed position for center biased stock/label
 - gap, center-notch , reflective black mark on the bottom or top of form
- Tear Bar
 - For tearing off gapped or continuous media
- Media Back Feed
 - Capable of backing up at least .5in/12mm

options ■ ■ ■

- Serial Interface (RS-232C)
 - Peel and Present Sensor
 - Locking cover with 2 keys.



datamax • o'neil
right by our customers.

A DOVER Company

www.datamax-oneil.com

Specifications subject to change without notice. All brand names, product names or trademarks belong to their respective holders. Copyright 2014, Datamax-O'Neil (rev8.13.14)